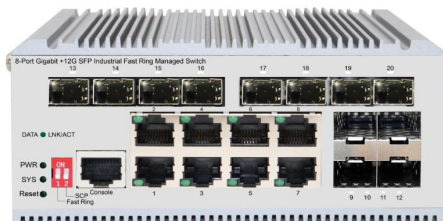


## Product Overview



PM120GSMI V1 is a Management ring-network industrial switch independently developed by UNIPOE, with 8\*10/100/1000Mbps adaptive RJ45 ports and 12 independent Gigabit SFP fiber module expansion slots. Support static routing functions, provide perfect security, QoS, and plenty of VLAN function has ring network function, can form a ring network, switch between by hand in hand form a ring network topology, the redundancy, high reliability characteristics can make in a ring online link disconnected all the way, will not affect the forwarding of data on the network.

The device adopts storage and forwarding, no fan, low power consumption design, has the advantages of easy to use, compact and beautiful, simple installation. The product is designed to meet Ethernet standards, with lightning protection, static protection mechanism, operating temperature range of -40°C to 75°C, stable performance, safety and reliability, can be widely used in intelligent transportation, telecommunications, security, financial securities, customs and other broadband data transmission fields.

## Product Features

- Supports IEEE802.3u, IEEE802.3ab, IEEE802.3z, and IEEE802.3x standards;
- RJ45 Supports automatic port flip (Auto MDI/MDIX);
- Supports IEEE802.3x full-duplex flow control and Backpressure half-duplex flow control;
- Panel indicators monitor working status and assist in fault analysis;
- High energy aluminum alloy roof heat conduction groove design;
- Supports one-click ring network and one-click storm suppression, featuring redundancy and high reliability;
- High reliability design, supporting traditional STP/RSTP layer 2 link protection technology;
- Supports manual aggregation and dynamic aggregation, which increases link bandwidth, improves link reliability, and implements load balancing and link backup;
- Flexible and convenient management and maintenance Supports various management modes, such as Console, Telnet, and SSH;
- Supports WEB management, which is simple and efficient, and facilitates installation and debugging by engineering and maintenance personnel. Supports file upload and download management through TFTP.

## Product Specifications

### Hardware Specification

<b>Model</b>	PM120GSMI V1
<b>Standard</b>	IEEE802.3, IEEE802.3u, IEEE802.3ab, IEEE802.3z, IEEE802.3x, IEEE802.1X, IEEE802.1q, IEEE802.1p, IEEE802.1d, IEEE802.1w, IEEE802.3ad
<b>Interface</b>	8*10/100/1000Mbps RJ45 Ports 12*1000Mbps SFP Slots 1 Console Port
<b>Indicator</b>	PWR, LNK/ACT, SYS
<b>Network Media</b>	10BASE-T: UTP category 3,4,5 cable (≤100m) 100BASE-TX: UTP category 5, 5e cable (≤100m) 1000BASE-T: UTP category 5e, 5 cable (≤100m) 1000BASE-X: MMF, SMF
<b>MAC Address Table</b>	8K, Auto-learning, Auto-aging
<b>Jumbo Frame</b>	9216Byte
<b>Packet Buffer</b>	4.1M bit
<b>Transfer Mode</b>	Store-and-forward
<b>Packet Forward Speed</b>	29.76Mpps
<b>Switching Capacity</b>	40Gbps
<b>Dimensions(L*W*H)</b>	145*109*62mm
<b>Fan Quantity</b>	Fanless
<b>Green Energy Saving</b>	IEEE 802.3az
<b>Input Power Supply</b>	DC:12-55V
<b>Operating Temperature</b>	-40°C ~ 75 °C
<b>Storage Temperature</b>	-40 °C ~ 80 °C
<b>Operating Humidity</b>	10% ~ 90% non-condensing
<b>Storage Humidity</b>	5% ~ 90% non-condensing
<b>Surge Protection</b>	Differential mode ±2KV Common mode ±6KV
<b>MTBF</b>	>100000 hour
<b>Electrostatic Standard</b>	Contact ±6KV, Air ±8KV

## Software Specification

L2 Features	MAC Address Table	MAC Address Size
		MAC Aging Time
		MAC Filter
		MAC Notification
	Basic Management	Console/Telnet/SSH
		Http/Https, SSL/TLS
		FTP/TFTP
		Syslog
		SNMP (v1/v2c/v3), SNMP Trap
		SNTP/NTP
		CPU protect
		Software/Hardware watchdog
		Firmware Upgrade/Backup
		Ping/Traceroute
	Port Config	Bandwidth Control
		Flow Control
		EEE
		MTU
		CFM (802.1ag)
		EFM OAM (802.3ah)
		DDM
		Storm Control
		Port Isolation
		Port Security
		Virtual Cable Test
		ULDP/Cisco UDLD
	Discovery	LLDP (802.1ab)
		LLDP-MED
	(Link Aggregation)	Static
		LACP (802.3ad)
		Load Balance (src-mac/dst-mac/src-ip/dst-ip)
		Max groups and ports per group
	VLAN	VLAN (802.1Q 4K)
		Access/Trunk/Hybrid
		Private VLAN
		VLAN Filter
		MAC-based VLAN
		Protocol-based VLAN
		IP Subnet-based VLAN
		Voice VLAN
		GVRP/GMRP
		QinQ/Selective-QinQ/Flexible QinQ
		VLAN Translation/N:1 VLAN Translation
		Guest VLAN
	Network Loop Detection	Loopback Detection
		ERPS
	Spanning Tree	STP/RSTP/MSTP
		MSTP Support 64 instance
		BPDU Guard/Root Guard/BPDU Tunnel
	ARP	Static ARP
		ARP Scanning Prevention
		ARP Spoofing Prevention

IPv4 Related Function		ARP Guard
		Gratuitous ARP
		Dynamic ARP Inspection
		ARP Quantity Control
	ICMP	Anti ICMP Attack
		ICMP Rate Limit
		ICMP Unreachable Drop
	IP Forward	Static Route
		Route Aggregation
	Control Multicast	DCSCM
	Multicast VLAN	Multicast VLAN
		IGMP SNOOPING V1/V2/V3
	IGMP	Fast Leave
		IGMP Proxy
		DHCP Server
	DHCP	DHCP Client/BOOTP
		DHCP Relay
		DHCP Snooping
		DHCP Option 82/43/60/61/67
IPv6 Related Function	DHCPv6	DHCPv6 Server
		DHCPv6 Relay
		DHCPv6 Snooping
		IPv6 SAVI
		Security RA
	IPv6 Unicast Routing	Static Route
	IPv6 Multicast Routing	MLD v1/V2 Snooping
	IPv6 Features	SNMP over IPv6 Support
		HTTP over IPv6 Support
		SSH over IPv6 Support
		DNS over IPv6 Support
		IPv6 ping/traceroute Support
		IPv6 Telnet Support
		IPv6 Radius+ Support
		IPv6 Tacacs+ Support
		IPv6 SNTP/NTP Support
		IPv6 FTP/TFTP Support
		IPv6 IPsec Support
		IPv6 ACL
QoS(Quality Of Service)	Basic	Trust COS/DSCP
		Trust Port
	Scheduling	SP
		WRR
		WDRR
	Policy Map Stream	Based on VLAN
		Based on COS/DSCP
		Aggregate Policy Map
		Ingress Policy Map
	Policing	CAR Stream Shaping(leak algorithm)
		Ingress Policing
	Rewrite	COS/802.1p Priority
		IP Precedence
		IPv4 DSCP/IPv6 DSCP
		drop-precedence
		internal-priority
	Queuing	Ingress/Egress Rewrite
		DSCP to DSCP mapping

		DSCP to DP mapping
		DSCP to Queue mapping
		COS to DP mapping
		COS to Queue mapping
ACL	IP-ACL	SIP/DIP
		IP Protocol
		IP Priority(DSCP,TOS, Precedence)
		TCP,UDP src,dst Port
	MAC-ACL	SRC/DST MAC
		VLAN
		COS
		Tag/Untag
	IP-MAC ACL	MAC-ACL and IP-ACL
	User-defined ACL	Based on user defined profile
	ACL Features	Based on time period ACL
		ACL on VLAN
Based on ACL Stream		
Security	802.1x	Port Based Authentication
		Support EAPoR
		MAC based Authentication
		Guest VLAN
	MAB	Based on Port Authentication
		Based on MAC Authentication
	MAC Address Count Limit	Based on Port
		Based on VLAN
	IP Address Count Limit	Based on Port
		Based on VLAN
	Access Management	Based on source mac and IP address
	Deny DoS Attack	TCP Flag
		TCP Fragment
		IP Segment
		ICMP
	TACACS+	Standard Support
Radius	Standard Support	
	Client, Support MD5	
SSL	Openssl 1.1.0	
Redundancy Related Function	MRPP	Compatiable ERRP
	ULPP	Uplink Protection Protocol
		Smart Link/Monitor Link
	ULSM	Uplink State Monitor
Mirror	Mirror	Support one to one, multi to one
		Port based mirror, support ingress, egress, and both
		CPU based mirror
		Flow based mirror
		RSPAN

## Ordering information

Model	Product Information
PM120GSMI V1	8-Port Gigabit + 12G SFP Industrial Fast Ring Managed Switch