

LMK-0.66 Rail type current transformer



Selection Guide

Name	Rated voltage	Accuracy level	Primary current	Secondary current(A)	Inside diameter	Rated load
LMK-0.66	<input type="checkbox"/>	<input type="checkbox"/>	<input type="checkbox"/>	<input type="checkbox"/>	<input type="checkbox"/>	<input type="checkbox"/>
	Y:0.66KV	C5:0.5 class	150:150A 1000:1000A	5:5A	30: φ 30 ... 60: φ 60	C:5-3.75VA D:10-3.75VA

Product features

- Rail-type low-voltage current mutual inductance, the plastic shell is made of flame-retardant PC+ABS alloy material, which has good electrical insulation, corrosion resistance, heat resistance, wear resistance, impact resistance and stability.
- The product is equipped with a matching base, which is convenient and quick to install, with stronger consistency and beautiful and novel appearance.

Technical Parameters

National standard	GB/T 20840.1&2
Accuracy level	0.5class
Rated voltage	0.66KV
Rated primary current	150A-1000A
Rated secondary current	5A
Rated load	See Table1

Allow long-term operation at 110% rated current

The secondary winding applies a power frequency voltage of 3KV to the ground for 1min without breakdown and flashover

LMK-0.66 Rail type current transformer

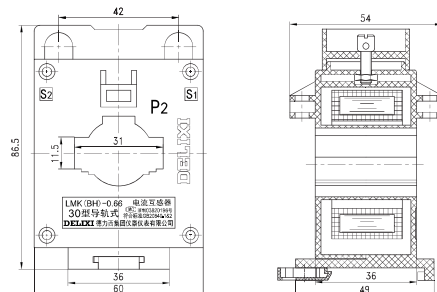
Table 1

Model	Rated current primary/secondary (A)	Busbar	Pcs	The turns through the core	Rated load (VA)	Accuracy level
		Section size (mm ²)				
LMK-0.66 Rail type	150/5	30*10	1	1	5-3.75VA	0.5
	200/5	30*10	1	1	5-3.75VA	0.5
	250/5	30*10	1	1	5-3.75VA	0.5
	300/5	30*10	1	1	5-3.75VA	0.5
	400/5	30*10	1	1	5-3.75VA	0.5
	500/5	30*10	1	1	5-3.75VA	0.5
	150/5	40*10	1	1	5-3.75VA	0.5
	200/5	40*10	1	1	5-3.75VA	0.5
	250/5	40*10	1	1	5-3.75VA	0.5
	300/5	40*10	1	1	5-3.75VA	0.5
	400/5	40*10	1	1	5-3.75VA	0.5
	500/5	40*10	1	1	5-3.75VA	0.5
	600/5	40*10	1	1	5-3.75VA	0.5
	800/5	40*10	1	1	10-3.75VA	0.5
	250/5	50*10	1	1	5-3.75VA	0.5
	300/5	50*10	1	1	5-3.75VA	0.5
	400/5	50*10	1	1	5-3.75VA	0.5
	500/5	50*10	1	1	5-3.75VA	0.5
	600/5	50*10	1	1	10-3.75VA	0.5
	800/5	50*10	1	1	10-3.75VA	0.5
	300/5	60*20	1	1	5-3.75VA	0.5
	400/5	60*20	1	1	5-3.75VA	0.5
	500/5	60*20	1	1	5-3.75VA	0.5
	600/5	60*20	1	1	10-3.75VA	0.5
	750/5	60*20	1	1	10-3.75VA	0.5
	800/5	60*20	1	1	10-3.75VA	0.5
	1000/5	60*20	1	1	10-3.75VA	0.5

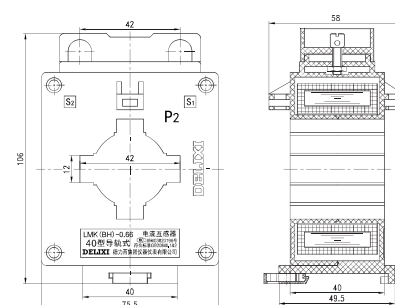
LMK-0.66 Rail type current transformer

Outline and installation dimensions (mm)

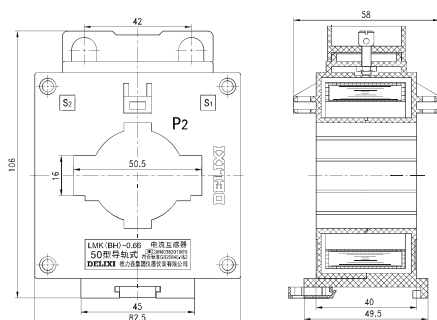
■ Guide rail type 30 pattern



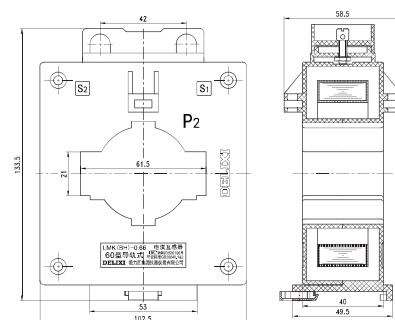
■ Guide rail type 40 pattern



■ Guide rail type 50 pattern



■ Guide rail type 60 pattern



Type	H	W	D	a	e	L1	L2
LMK-0.66 Rail type							
Type 30	86.5	60	36	31	11.5	49	36
Type 40	106	75.5	40	42	12	49.5	40
Type 50	106	82.5	40	50.5	16	49.5	40
Type 60	133.5	102.5	40	61.5	21	49.5	40