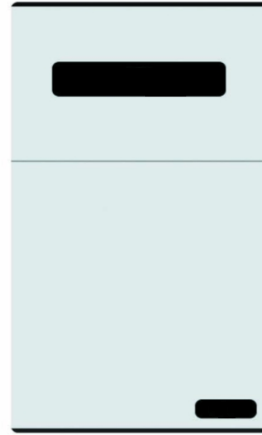


## Automatic Gel Imaging and Analysis System

**AELAB** Automatic Gel Imaging and Analysis System is a highly integrated and fully automated gel imaging system, system interface is simple and practical, the main interface has shooting button and time control to guide the user, it is very easy to operate, no need to have manual and tedious debug, it is your best choice.

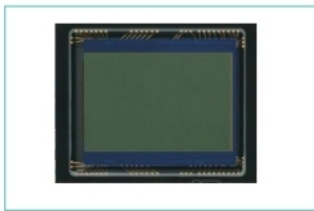
### Technical Specifications:

Mode	AE-GEL100
Pixel	2592×1944(5.03MP)
Exposure Time	1ms-3000ms
QE value	High QE: >65%
Binning	1×1
Bit Depth	16 bit (0 - 65535)
OD	≥4.8 OD
Lens	Motorized 8-48 mm, F1.2
Trans-UV	302nm
Epi-White	LED
Trans-White	UV to white sample plate
Epi-UV	254nm、302nm、365nm for option
Filters	590nm, Others for option
UV area	21×21cm
Timing off	1~60 mins



### Features:

High-resolution CCD camera with less noise, High sensitivity , High resolution, f 1.2 flux, 6 times zoom, three variable electric dynamic focus lens and nucleic acid dye filter.



CCD Camera



Autofocus Lens



Multilayer coating Filter

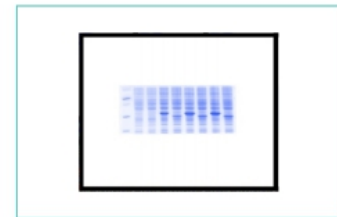
Specialized overlay glue cutting filter, compared with the traditional one, it has many advantages, easy to operate, can prevent UV and blue light damage, no need to operate in dark room, work very well under strong light condition The white light sample plate is used for SDS- PAGE glue samples shooting .



UV sample plate



glue cutting filter

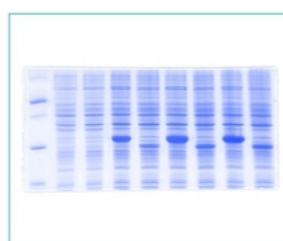


white sample plate

It can be used to do nucleic acid test for various fluorescent dyes, such as EB, SYBRGold, SYBR Green, SYBR Safe, Gel Red Gel GreenTexas, Red, Fluorescein marked DNA/ RNA .



DNA gel imaging



SDS-PAGE Imaging



Thin-layer chromatography



Colony counting