



- Single-phase AC two-stage high performance power supply filter
- Rated current: 20--30A
- Double filter circuit design
- Install way: plug / screw

Specification

- Rated Voltage: 110VAC-250VAC
- Working frequency: 50/60HZ
- Rated Current: 20A-30A
- Withstand test voltage: 1750VAC
- Temperature range: -25°C~85°C
- Certificate: CQC,CE,ROHS
- Fire resistance: UL 94V-0

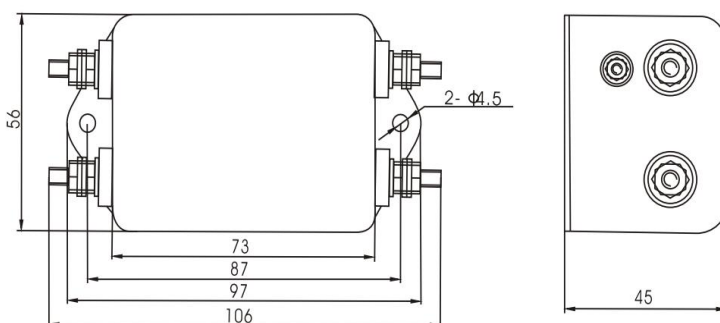
Characteristic

- Using 2 stage filter circuit design, excellent attenuation ability of common mode and differential mode signal
- With high quality capacitor and High permeability Mn-Zn ferrite magnetic ring, excellent performance.
- It is good effective to solve the high frequency interference of 10Khz-30MHZ.
- There are a variety of parts combination collocation, to meet the requirement for testing different equipment.
- Can be customize according to customer requirements.

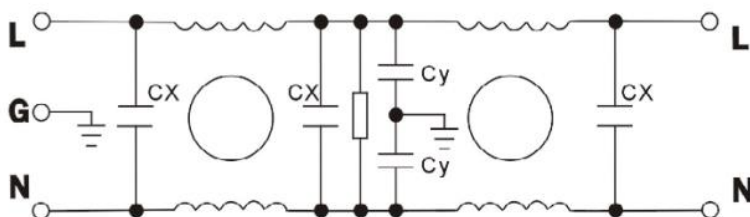
Application

- Laser cutting equipment
- Industrial automation device
- Electric control equipment

Products size



Electric schematic



Specification

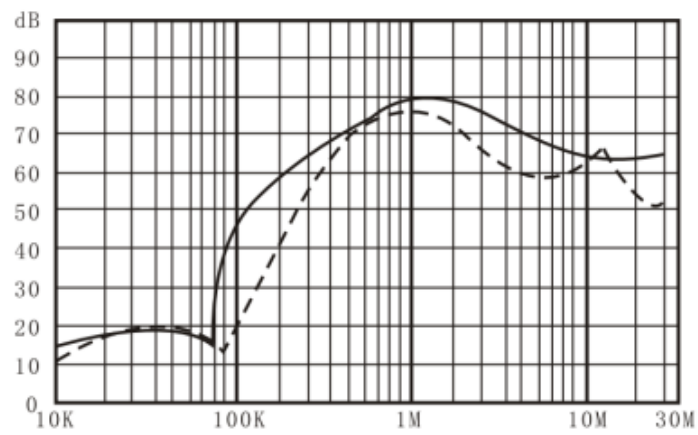
Model No. (A)	Rated current(A)	leakage current(mA)	Inductance (mH)	Capacitor		Resistor [k Ω]	Weight (g)
				Cx [pF]	Cy [nF]		
DEA5-20A	20	≤0.8	3.5	0.47	4.7	1000	170g
DEA5-30A	30	≤0.8	1.8	0.47	4.7	1000	170g

Insertion loss

Specification		Frequency (MHz)					
		0.15	0.5	1	5	10	30
DEA5-20A	Common mode (dB)	54	71	80	70	65	65
	Differential mode (dB)	31	69	76	60	63	51
DEA5-30A	Common mode (dB)	54	71	80	70	65	65
	Differential mode (dB)	31	69	76	60	63	51

Insertion Loss

———— (Common Mode) - - - - - (Differential Mode)



DEA5-20A/30A