



Product information

EMI Single-phase universal filter-DBA3

Description

Small size, easy to install, is a general filter, using the chip connection, can be customized, with strong anti-interference, relatively stable performance, a wide range of features.

Technical Data

Rated Voltage	115/250VAC
Line Frequency	50/60Hz
Test Voltage	1500VDC(line/line) 2150VAC(line/ground)
Insulation Resistance	>50M @500VDC
Temperature Rise	<30
Climatic Category	25/085/21
Housing Material	Nickel-plated iron

Approval & Compliance



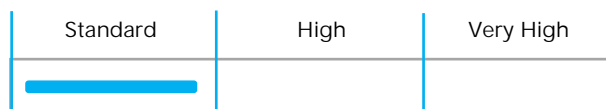
Features

- Rated current : 1A-10A
- Small size, easy to install
- Relatively stable performance
- Can be customized upon request

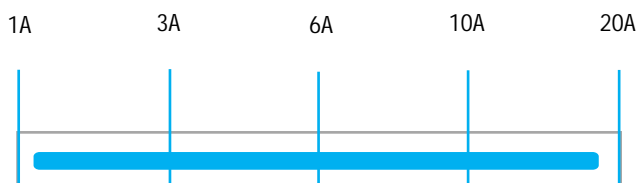
Applications

- Electric power system
- Electronic equipment
- Various disinfection and purification equipment
- Laser cutting equipment
- Autonomous robots and so on

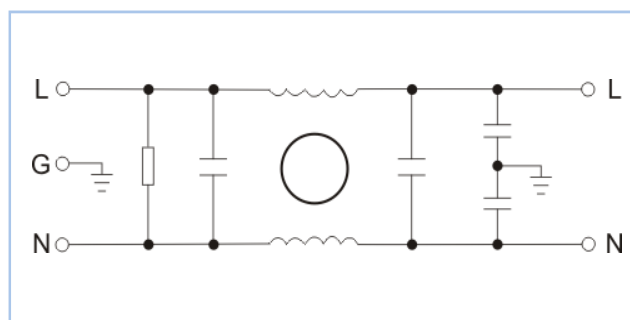
Performance Indicator



Rated Current [A]

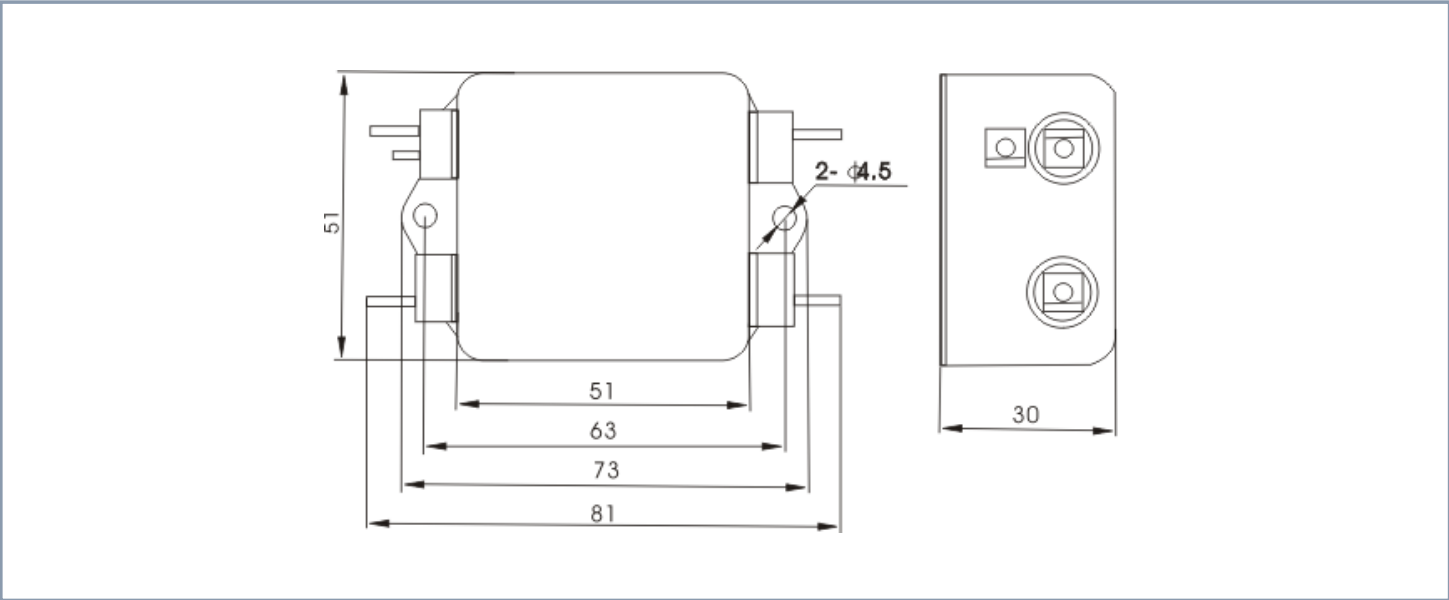


Typical Circuit Diagram



Part No	Rated Current	Rated Current	Case Type	Termination		Safety Certification	Remark
				Input	Output		
DBA3-1A	1A	<0.5mA	A3	Bolts/Lnserts	Bolts/Lnserts	cUL 、 CE CQC、 ROHS	Parameter customization
DBA3-3A	3A	<0.5mA	A3	Bolts/Lnserts	Bolts/Lnserts		
DBA3-6A	6A	<0.5mA	A3	Bolts/Lnserts	Bolts/Lnserts		
DBA3-10A	10A	<0.5mA	A3	Bolts/Lnserts	Bolts/Lnserts		
DBA3-20A	20A	<0.5mA	A3	Bolts/Lnserts	Bolts/Lnserts		

Overall Dimension (±1mm)



Insertion loss -(common mode)

