



Product information

IEC Socket type power filter-DAI2

Description

Small size, easy to install, can be customized, with strong anti-interference, high-performance features Point, AC power socket input, 6.3x0.8 chip output connection, with protection Fuse and socket integrated design.

Technical Data

Rated Voltage	115/250VAC
Line Frequency	50/60Hz
Test Voltage	1500VDC (line/line) 2150VAC (line/ground)
Insulation Resistance	>50M @500VDC
Temperature Rise	<30
Climatic Category	25/085/21
Housing Material	Nickel-plated iron

Approval & Compliance



Features

Rated current : 1A-10A

Small size, easy to install

It has the characteristics of strong anti-interference and high performance

Can be customized upon request

Applications

Animation entertainment equipment

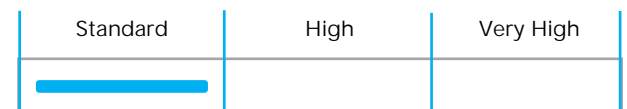
Small and medium machine

All kinds of fitness equipment

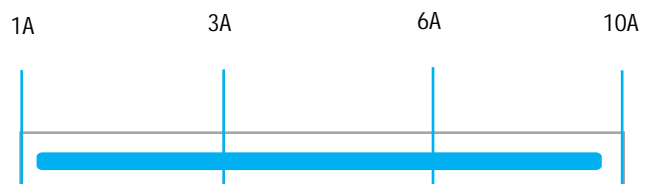
All kinds of automatic control equipment

Portable electrical and electronic equipment

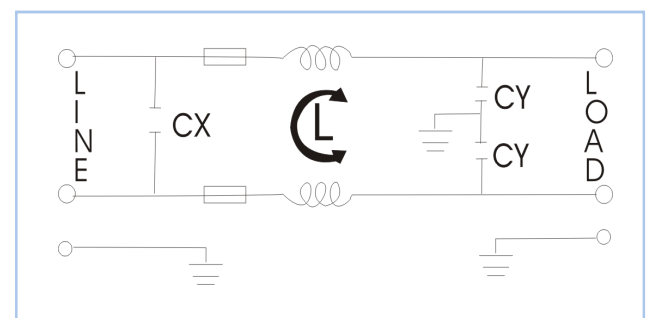
Performance Indicator



Rated Current [A]

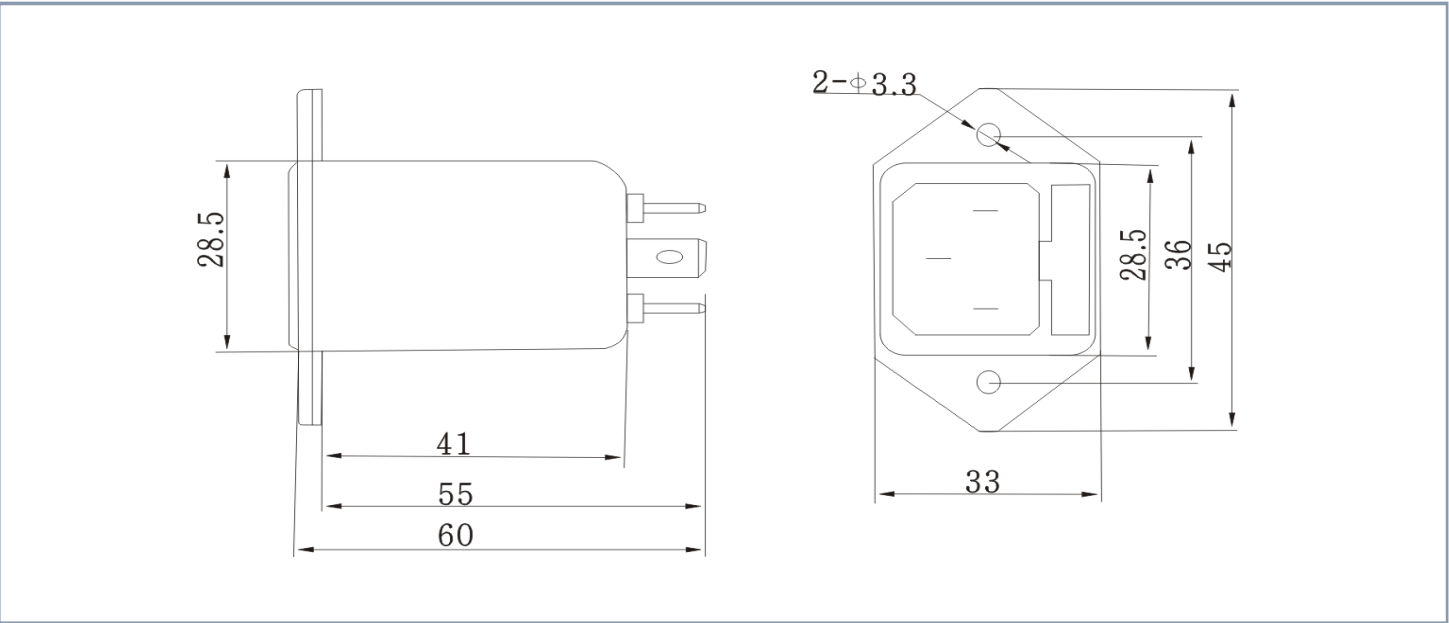


Typical Circuit Diagram

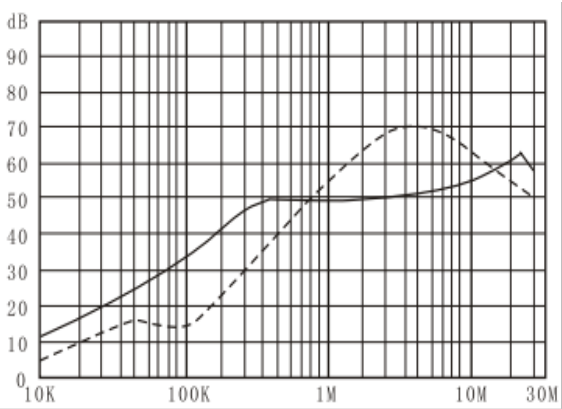


Part No	Rated Current	Rated Current	Case Type	Termination		Safety Certification	Remark
				Input	Output		
DAI2-1A	1A	<0.5mA	I2	Socket	Terminal	cUL、 CE、 ROHS	Parameter customization
DAI2-3A	3A	<0.5mA	I2	Socket	Terminal		
DAI2-6A	6A	<0.5mA	I2	Socket	Terminal		
DAI2-10A	10A	<0.5mA	I2	Socket	Terminal		

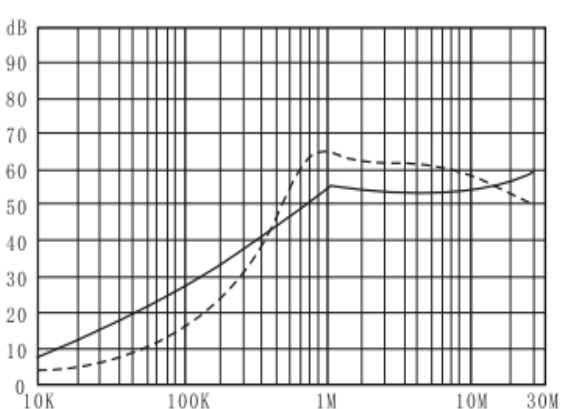
Overall Dimension (±1mm)



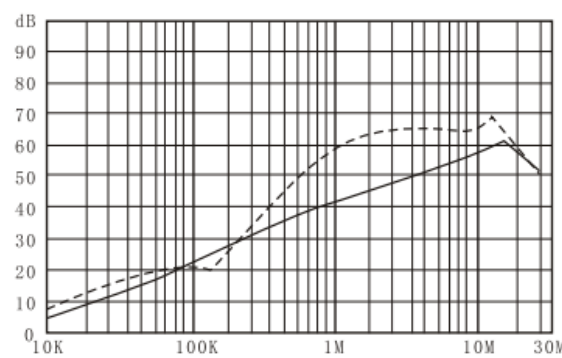
Insertion loss -(common mode)



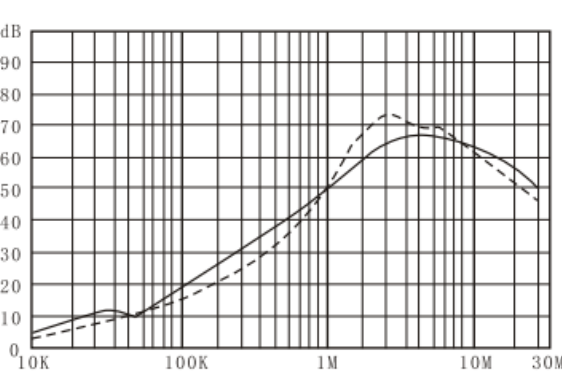
DA12-1A



DA12-3A



DA12-6A



DA12-10A