



Product information

Single-phase high performance filter-DEA4

Description

Small size, easy to install, using the terminal station connection mode, can be customized link mode, bipolar design of high-performance filtering, strong anti-interference characteristics, and a wide range of uses.

Technical Data

Rated Voltage	115/250VAC
Line Frequency	50/60Hz
Test Voltage	1500VDC (line/line) 2150VAC (line/ground)
Insulation Resistance	>50M @500VDC
Temperature Rise	<30
Climatic Category	25/085/21
Housing Material	Nickel-plated iron

Approval & Compliance



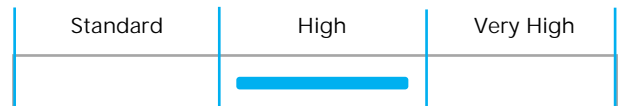
Features

- Rated current :3A-20A
- Small size, easy to install
- Two-stage filter design
- Can be customized upon request

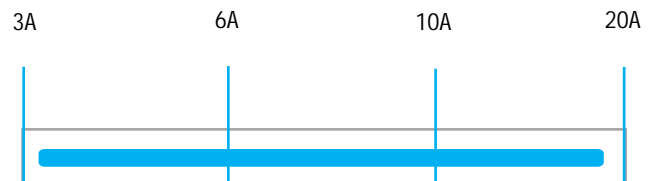
Applications

- Electrical appliances, testing equipment
- Electronic equipment, medical equipment
- Various disinfection and purification equipment
- Laser cutting equipment
- Autonomous robots and so on

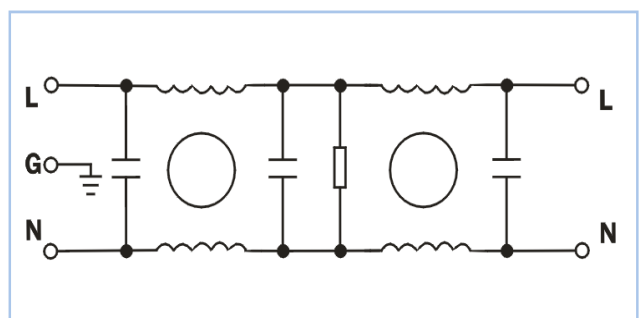
Performance Indicator



Rated Current [A]

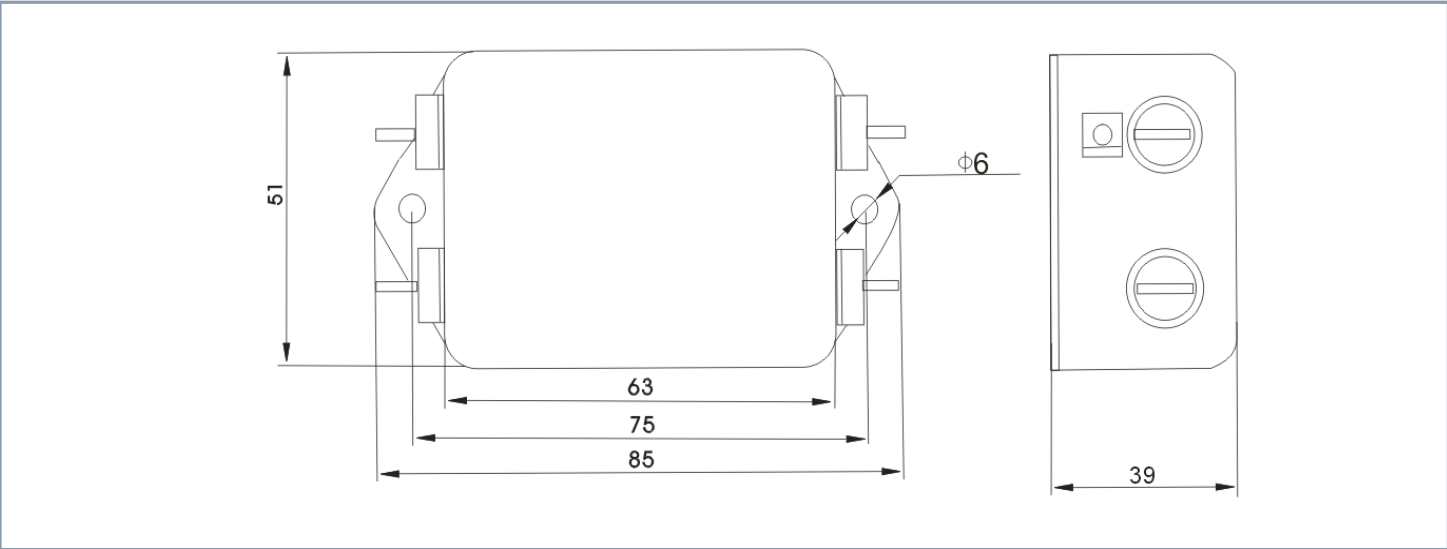


Typical Circuit Diagram



Part No	Rated Current	Rated Current	Case Type	Termination		Safety Certification	Remark
				Input	Output		
DEA4-3A	3A	<0.00mA	A4	Bolts/Lnserts	Bolts/Lnserts	CUL 、 CE CQC、 ROHS	Parameter customization
DEA4-6A	6A	<0.00mA	A4	Bolts/Lnserts	Bolts/Lnserts		
DEA4-10A	10A	<0.00mA	A4	Bolts/Lnserts	Bolts/Lnserts		
DEA4-16A/20A	16A/20A	<0.00mA	A4	Bolts/Lnserts	Bolts/Lnserts		

Overall Dimension (±1mm)



Insertion loss -(common mode)

